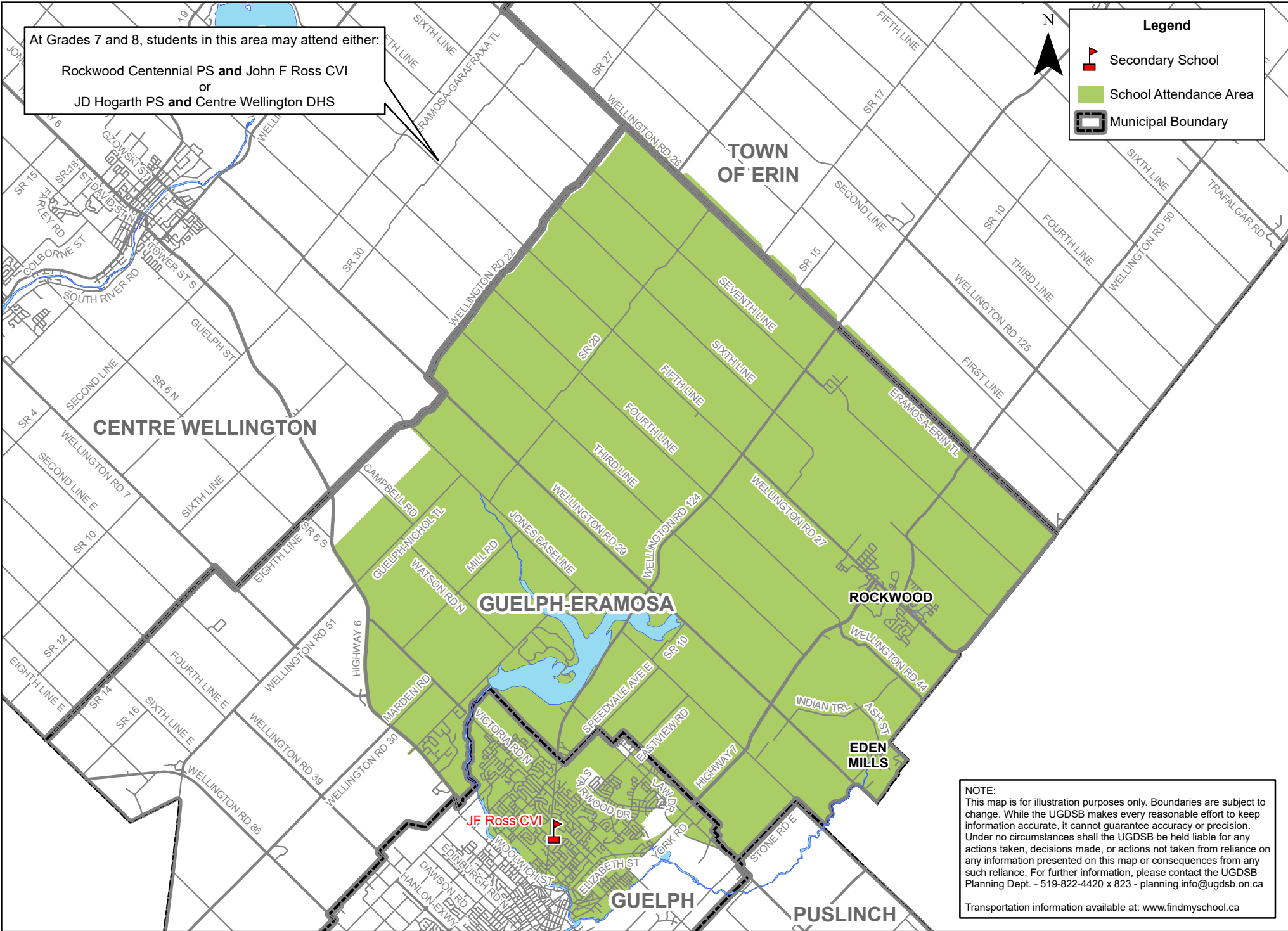





# JF Ross CVI English Secondary Attendance Area (Map 1 of 2)



At Grades 7 and 8, students in this area may attend either:  
 Rockwood Centennial PS and John F Ross CVI  
 or  
 JD Hogarth PS and Centre Wellington DHS

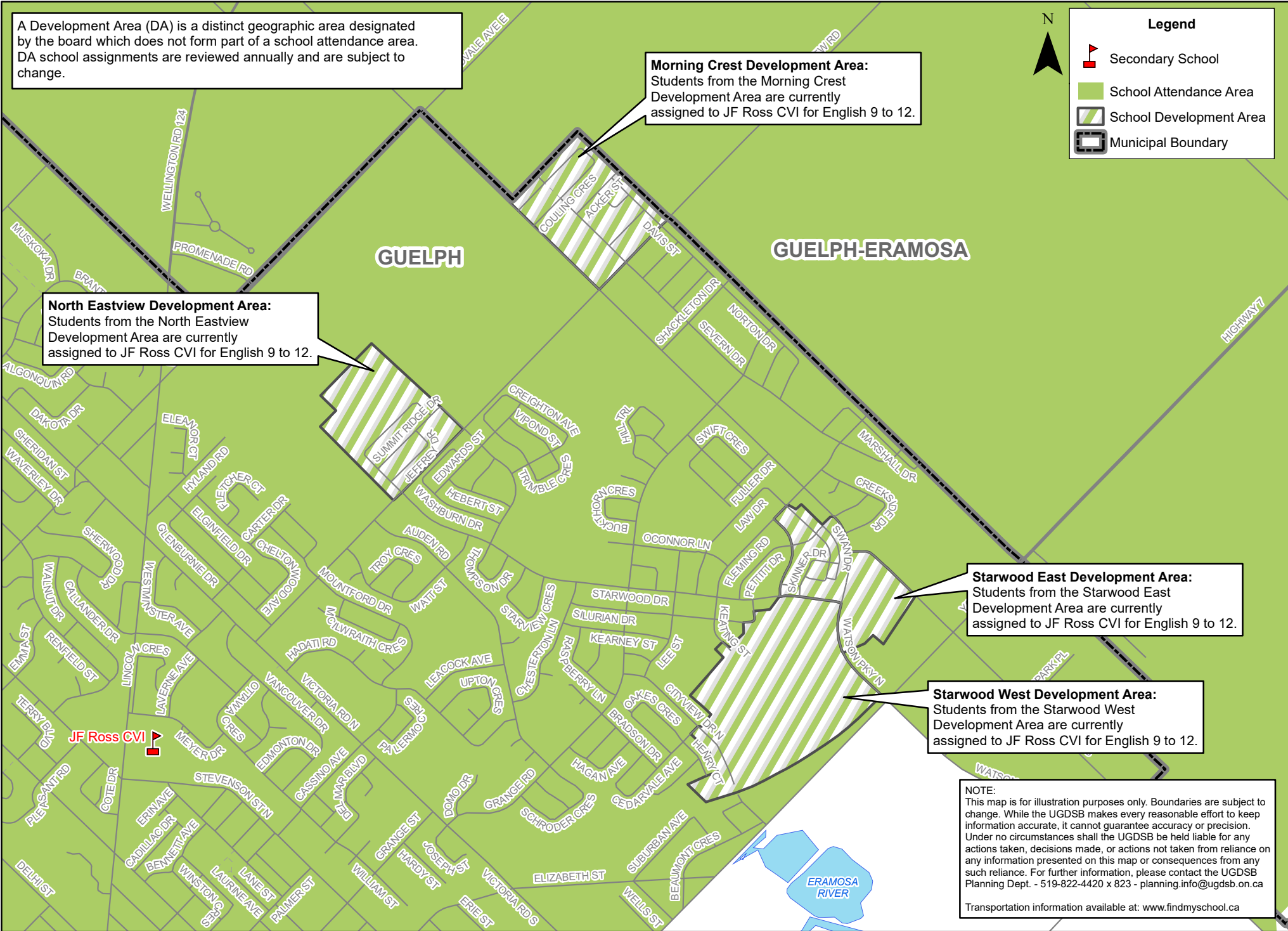
**Legend**

-  Secondary School
-  School Attendance Area
-  Municipal Boundary

**NOTE:**  
 This map is for illustration purposes only. Boundaries are subject to change. While the UGDSB makes every reasonable effort to keep information accurate, it cannot guarantee accuracy or precision. Under no circumstances shall the UGDSB be held liable for any actions taken, decisions made, or actions not taken from reliance on any information presented on this map or consequences from any such reliance. For further information, please contact the UGDSB Planning Dept. - 519-822-4420 x 823 - [planning.info@ugdsb.on.ca](mailto:planning.info@ugdsb.on.ca)

Transportation information available at: [www.findmyschool.ca](http://www.findmyschool.ca)

# JF Ross CVI English Secondary Attendance Area (Map 2 of 2)



A Development Area (DA) is a distinct geographic area designated by the board which does not form part of a school attendance area. DA school assignments are reviewed annually and are subject to change.





**Morning Crest Development Area:**  
Students from the Morning Crest Development Area are currently assigned to JF Ross CVI for English 9 to 12.

**North Eastview Development Area:**  
Students from the North Eastview Development Area are currently assigned to JF Ross CVI for English 9 to 12.

**Starwood East Development Area:**  
Students from the Starwood East Development Area are currently assigned to JF Ross CVI for English 9 to 12.

**Starwood West Development Area:**  
Students from the Starwood West Development Area are currently assigned to JF Ross CVI for English 9 to 12.

**Legend**

-  Secondary School
-  School Attendance Area
-  School Development Area
-  Municipal Boundary

**NOTE:**  
This map is for illustration purposes only. Boundaries are subject to change. While the UGDSB makes every reasonable effort to keep information accurate, it cannot guarantee accuracy or precision. Under no circumstances shall the UGDSB be held liable for any actions taken, decisions made, or actions not taken from reliance on any information presented on this map or consequences from any such reliance. For further information, please contact the UGDSB Planning Dept. - 519-822-4420 x 823 - [planning.info@ugdsb.on.ca](mailto:planning.info@ugdsb.on.ca)

Transportation information available at: [www.findmyschool.ca](http://www.findmyschool.ca)