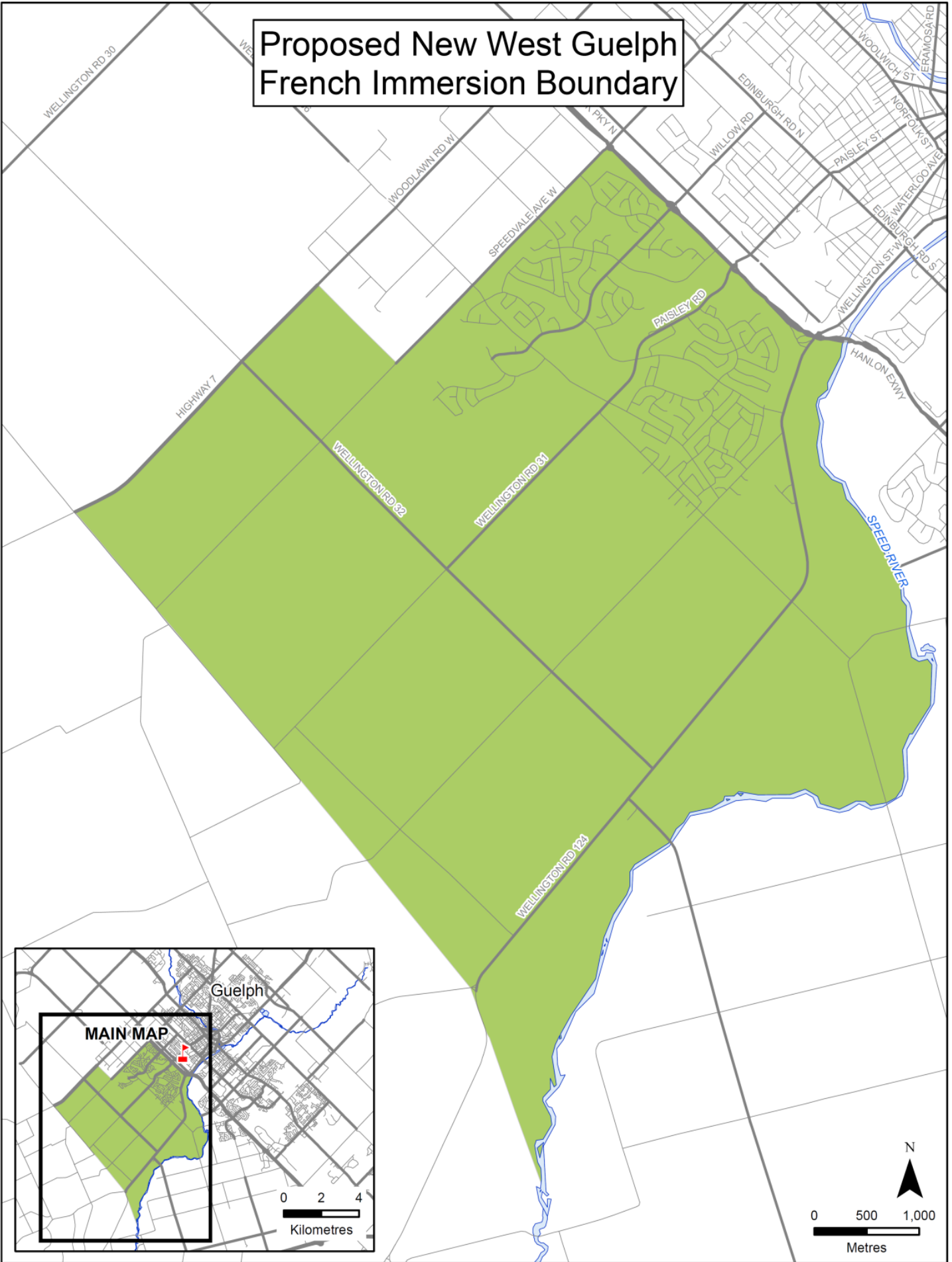
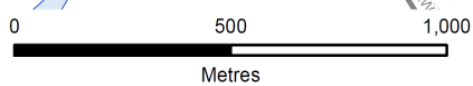
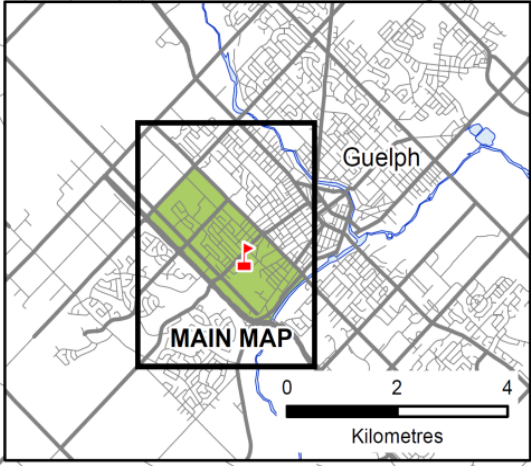
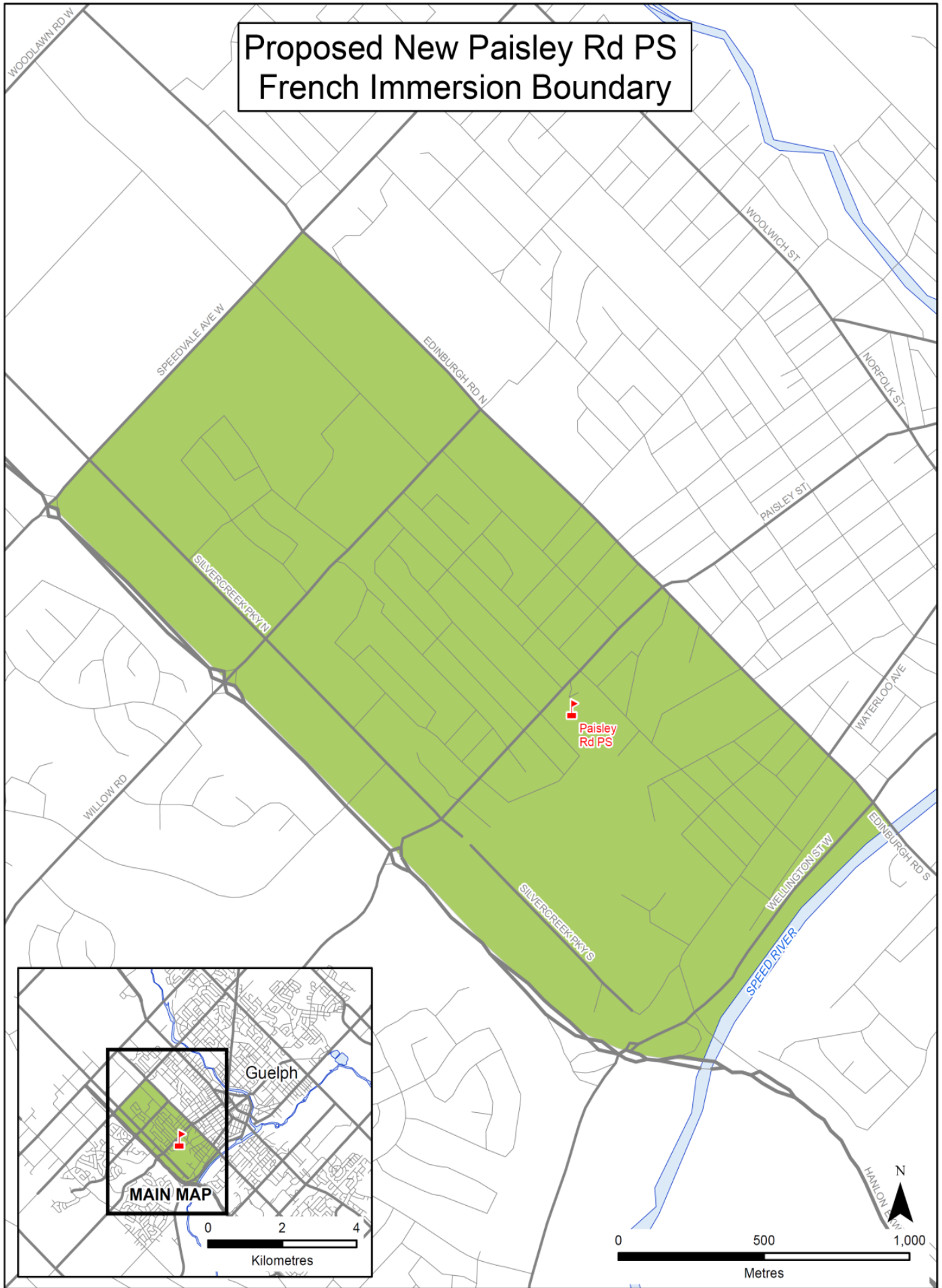


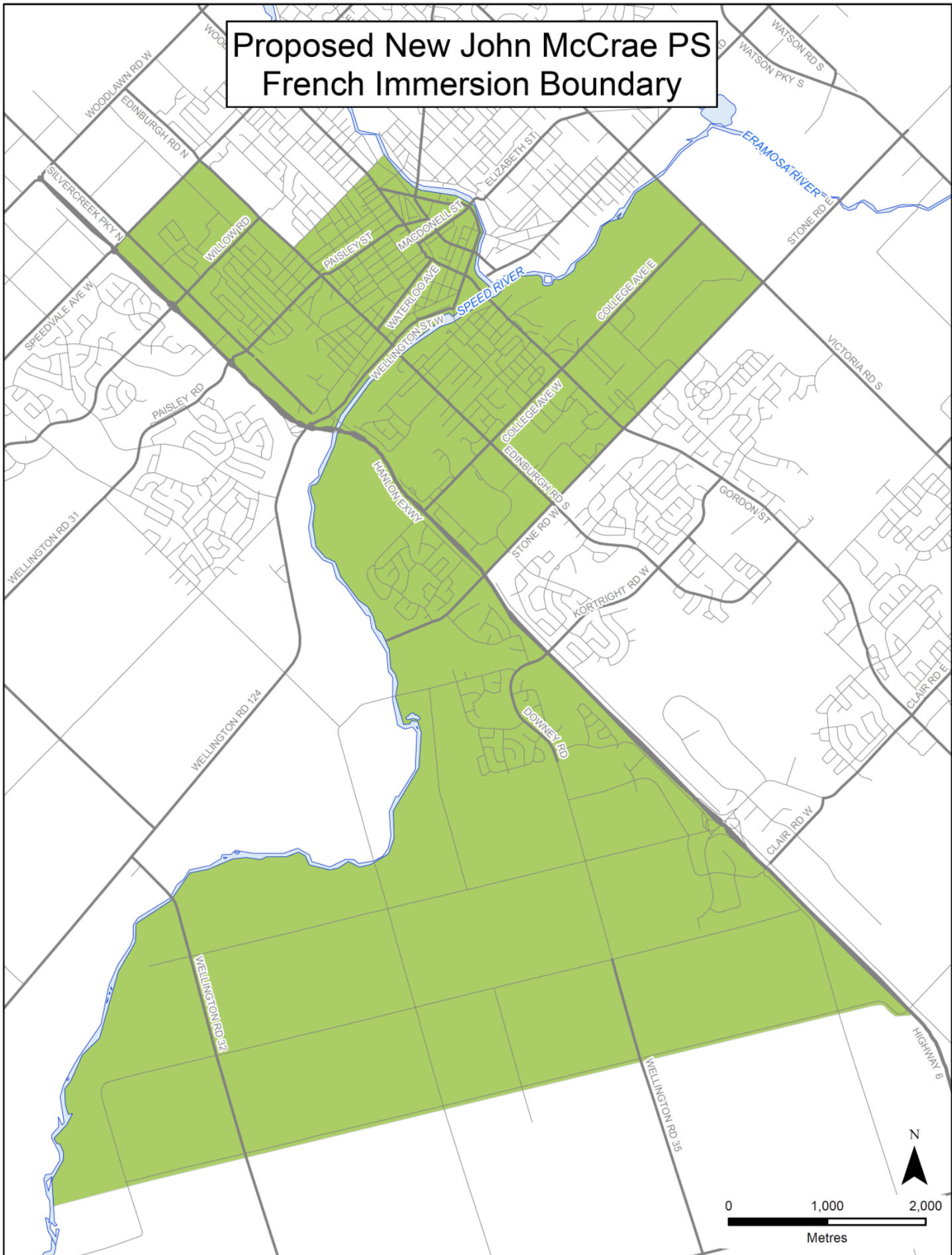
Proposed New West Guelph French Immersion Boundary



Proposed New Paisley Rd PS French Immersion Boundary



Proposed New John McCrae PS French Immersion Boundary



Options 1-3 Implementation Plan

	18/19	19/20	20/21	21/22	22/23	23/24	24/25	25/26	26/27
Gateway Dr PS	JK/SK	JK-1	JK-2	JK-3	JK-4	JK-3	JK-3	JK-3	
Willow Rd PS						Gr 4-5	Gr 4-6	Gr 4-7	Gr 4-8

Option 3 Enrolment Projection

	OTG	OTG + Current Temporary Capacity	Current Program	Actual Enrolment 2016	5 Yr Projected Enrolment					10 Yr 2026	Planned Program	
					2017	2018	2019	2020	2021			
Gateway Drive PS	386	386	JK-8 RT	223	225	215	210	205	200	190	JK-8 RT	
			FI	0	0	55 (JK/SK)	80 (JK-1)	110 (JK-2)	130 (JK-3)	135	JK-3 FI	
			SE	27	25	25	25	25	25	25	25	SE
			Total	250	250	295	315	340	355	350		
Utilization				65%	65%	76%	82%	88%	92%	91%		
John McCrae PS	484	622	JK-8 FI	635	640	610	595	570	585	530	JK-8 FI	
			Total	635	640	610	595	570	585	530		
Utilization				131%	132%	126%	123%	118%	121%	110%		
Paisley Road PS	510	533	JK-6 RT	188	200	200	210	210	210	235	JK-6 RT	
			JK-3 FI	270	260	255 (JK-4)	270 (JK-5)	285 (JK-6)	265	205	JK-6 FI	
			Total	458	460	455	480	495	475	440		
Utilization				90%	90%	89%	94%	97%	93%	86%		
Willow Road PS	607	607	JK-8 RT	358	366	375	390	390	395	415	JK-8 RT	
			FI	0	27	0	0	0	0	105 (4-8)	4-8 FI	
			SE	8	10	10	10	10	10	10	SE	
			Total	366	403	385	400	400	405	530		
Utilization				60%	66%	63%	66%	66%	67%	87%		

Option 4 Implementation Plan

	18/19	19/20	20/21	21/22	22/23	23/24
Gateway Dr PS	JK-3	JK-4	JK-3	JK-3	JK-4	JK-3
Willow Rd PS			Gr 4-5	Gr 4-6	Gr 4-7	Gr 4-8

Option 4 Enrolment Projections

	OTG	OTG + Current Temporary Capacity	Current Program	Actual Enrolment 2016	5 Yr Projected Enrolment					10 Yr 2026	Planned Program
					2017	2018	2019	2020	2021		
Gateway Drive PS	386	386	JK-8 RT	223	225	215	210	205	200	195	JK-8 RT
			FI	0	0	135 (JK-3)	160 (JK-4)	130	130	135	JK-3 FI
			SE	27	25	25	25	25	25	25	SE
			Total	250	250	375	395	360	355	355	
Utilization				65%	65%	97%	102%	93%	92%	92%	
John McCrae PS	484	622	JK-8 FI	635	640	610	620	595	585	530	JK-8 FI
			Total	635	640	610	620	595	585	530	
Utilization				131%	132%	126%	128%	123%	121%	110%	
Paisley Road PS	510	533	JK-6 RT	188	200	205	210	205	210	235	JK-6 RT
			JK-3 FI	270	260	170 (JK-4)	165 (JK-5)	190 (JK-6)	190	205	JK-6 FI
			Total	458	460	375	375	395	400	440	
Utilization				90%	90%	74%	74%	77%	78%	86%	
Willow Road PS	607	607	JK-8 RT	358	366	375	390	390	395	415	JK-8 RT
			FI	0	27	0	0	50 (Gr.4-5)	70 (Gr.4-6)	105 (Gr.4-8)	4-8 FI
			SE	8	10	10	10	10	10	10	SE
			Total	366	403	385	400	450	475	530	
Utilization				60%	66%	63%	66%	74%	78%	87%	

Comparison – Options 3 & 4

	Option 3	Option 4
FI Grades At Gateway Dr PS In 2018/19	JK/SK	JK-3
Projected # Students In FI In 2018/19 At Gateway Dr PS	55	135
Estimated # FI Classes At Gateway Dr PS In 2018/19	2 FDK	2 FDK, 4 Primary
Estimated # FI Classes At Paisley Rd PS In 2018/19	2 FDK, 8 Primary, 2 Junior	2 FDK, 4 Primary, 2 Junior
# <u>Existing</u> Students Moving From Paisley And Willow Holding School	Paisley – 21 Willow – 2	Paisley – 104 Willow – 2
% Of FI Students Moving From Paisley Rd PS In 2018/19	17%	44%
# Families With Siblings Split (based on known 17/18 enrolment)	11	32
# Families With Siblings Split Between Paisley/John McCrae and Gateway/Willow One Grade Apart	4	2